



RSI

Radiometric Services & Instruments, LLC

Your #1 source for thickness and coating gauge needs.

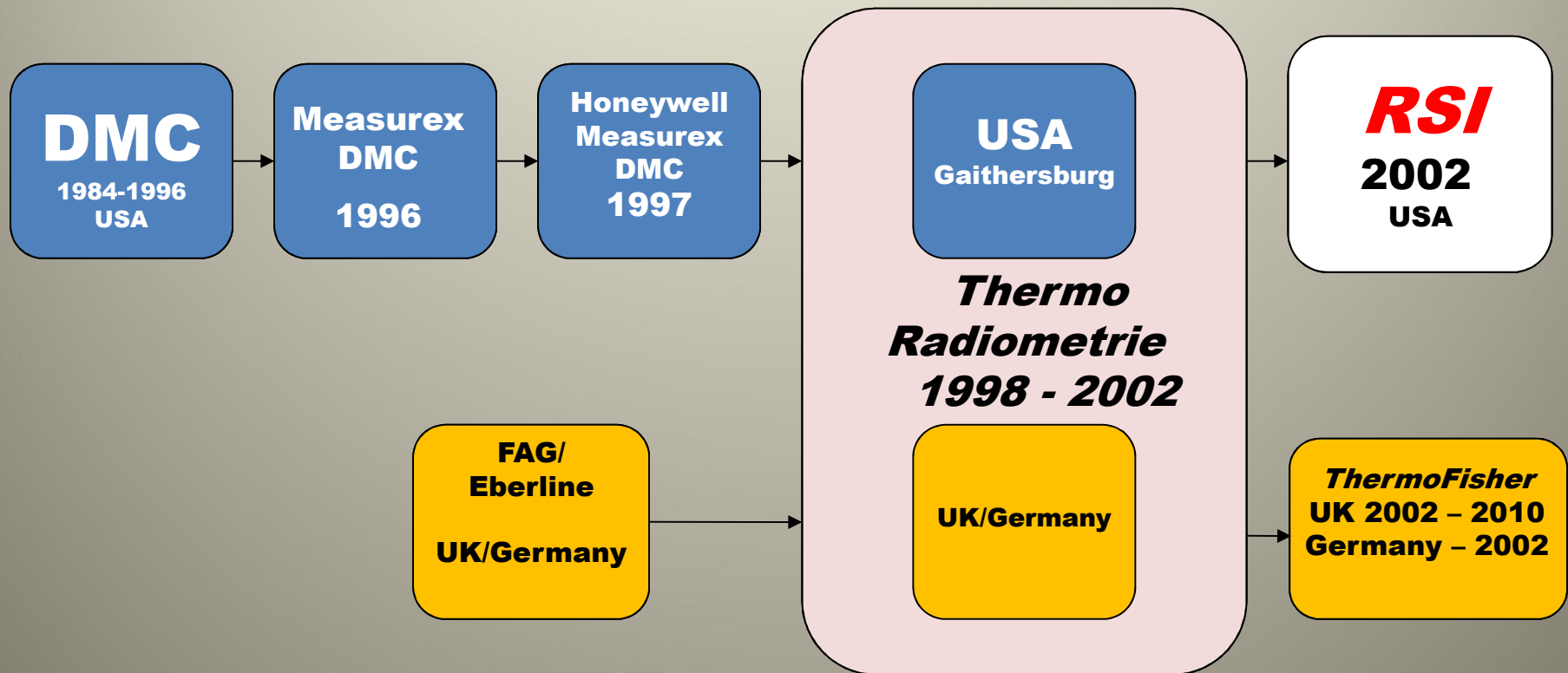
RSI

An Introduction

THE LARGEST USA MANUFACTURER OF GAUGING FOR THE METALS INDUSTRY

Radiometric Services & Instruments, LLC

RSI...the Origins

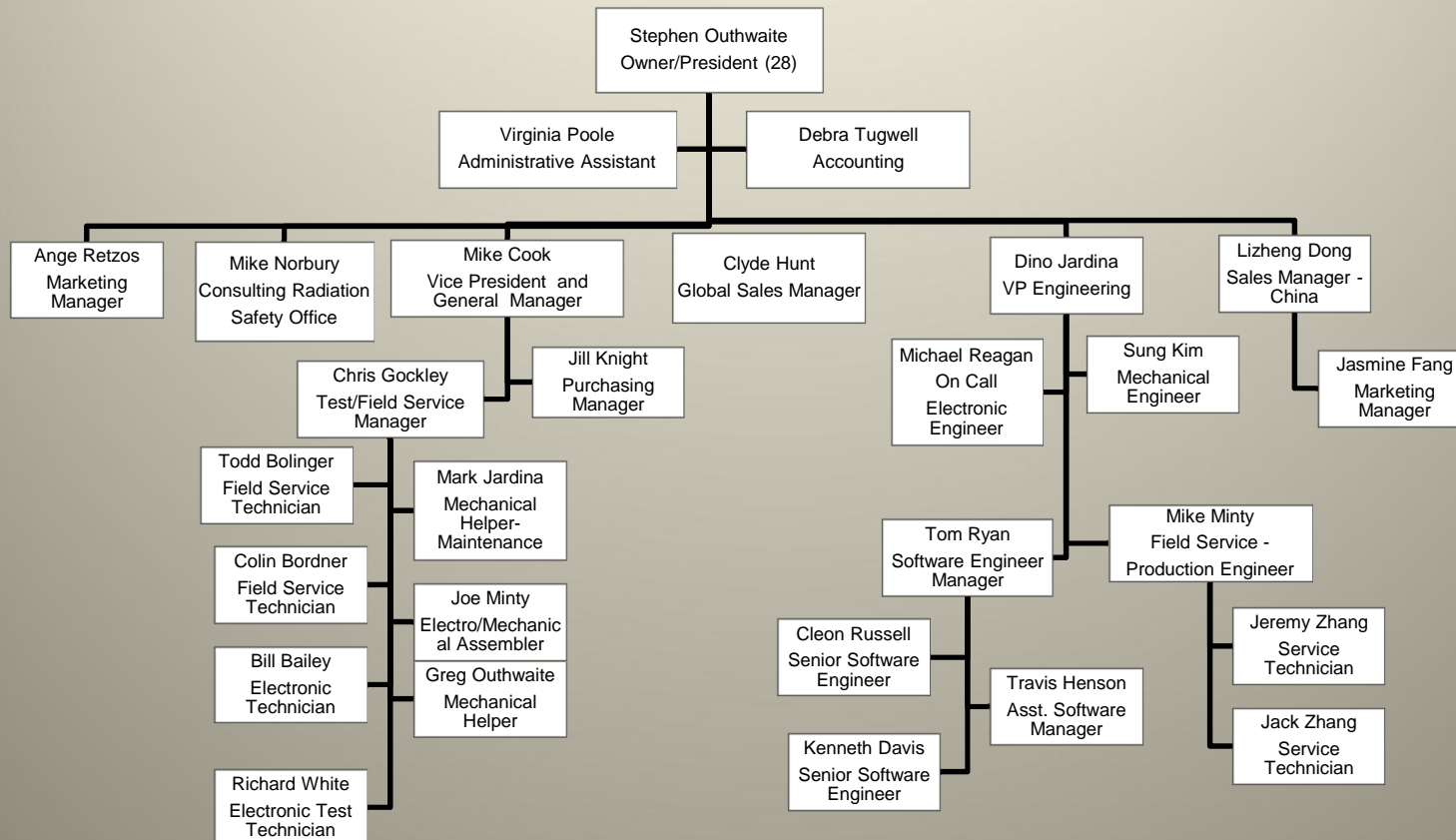


RSI...Who We Are

- ***A full service supplier of high quality Gauging Systems and Upgrades***
- ***Staffed by former DMC and Radiometrie personnel with over 200 years of combined knowledge and experience***



RSI...the People



RSI know gauges better than any other North American supplier

RSI...Mission Statement

Quality

RSI products are designed using the highest quality components and workmanship. Equipment arrives fully tested for fast, efficient installation and startup.

Reliability

RSI believes reliability is the key to customer satisfaction. Everything we manufacture is built with this in mind.

Service and Support

RSI will respond quickly and courteously when problems occur.

Science Behind the Measurement

RSI utilizes the most advanced scientific principles to simplify gauge operation. This translates to better performance and reliability, creating better value for the customer.

RSI...Where We Are

RSI is conveniently located in Frederick, Maryland . . . 24 miles from the original DMC / Radiometrie location.

Easily accessible by highway and major airports in Washington, DC (45 miles) and Baltimore, Maryland (50 miles).

17,000 sq. ft. of Administrative, Engineering and Manufacturing space.



RSI...What We Do

- Manufacturer of high quality thickness and coating gauges for the metals Industry
- Supply upgrade packages for thickness and coating gauges from DMC, Radiometrie, Loral, and Weston to name a few
- Large quantity of spare parts in stock, ready to ship
- Largest supplier of hard to find and obsolete DMC and Radiometrie parts in the industry
- Repairs on all models of DMC and Radiometrie thickness and coating gauges from our fully-equipped repair facilities in Frederick, Maryland and Beijing, China
- Fast, responsive, on-site service by experienced service technicians who know your equipment

RSI...in the Americas



Sales Agents in the USA, Canada, Mexico and Argentina

Service Support from Service Centers in:

- Frederick, Maryland
- Wheeling, West Virginia
- Detroit, Michigan
- 24-hour telephone Hot Line

Systems Supported:

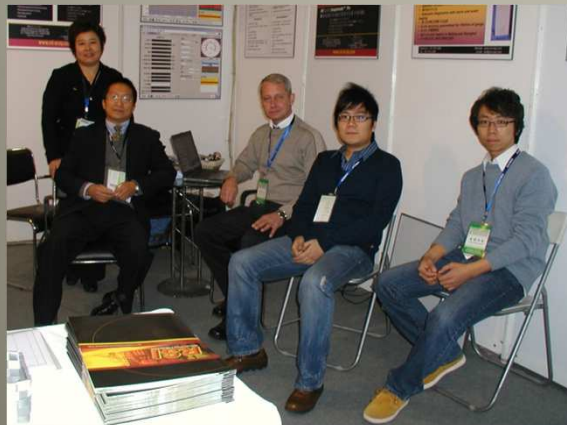
- **RSI** Thickness & Coating Gauges
- DMC and Radiometrie Thickness & Coating Gauges
- Thermo RM215 & RM312 Thickness Gauges

RSI...Worldwide



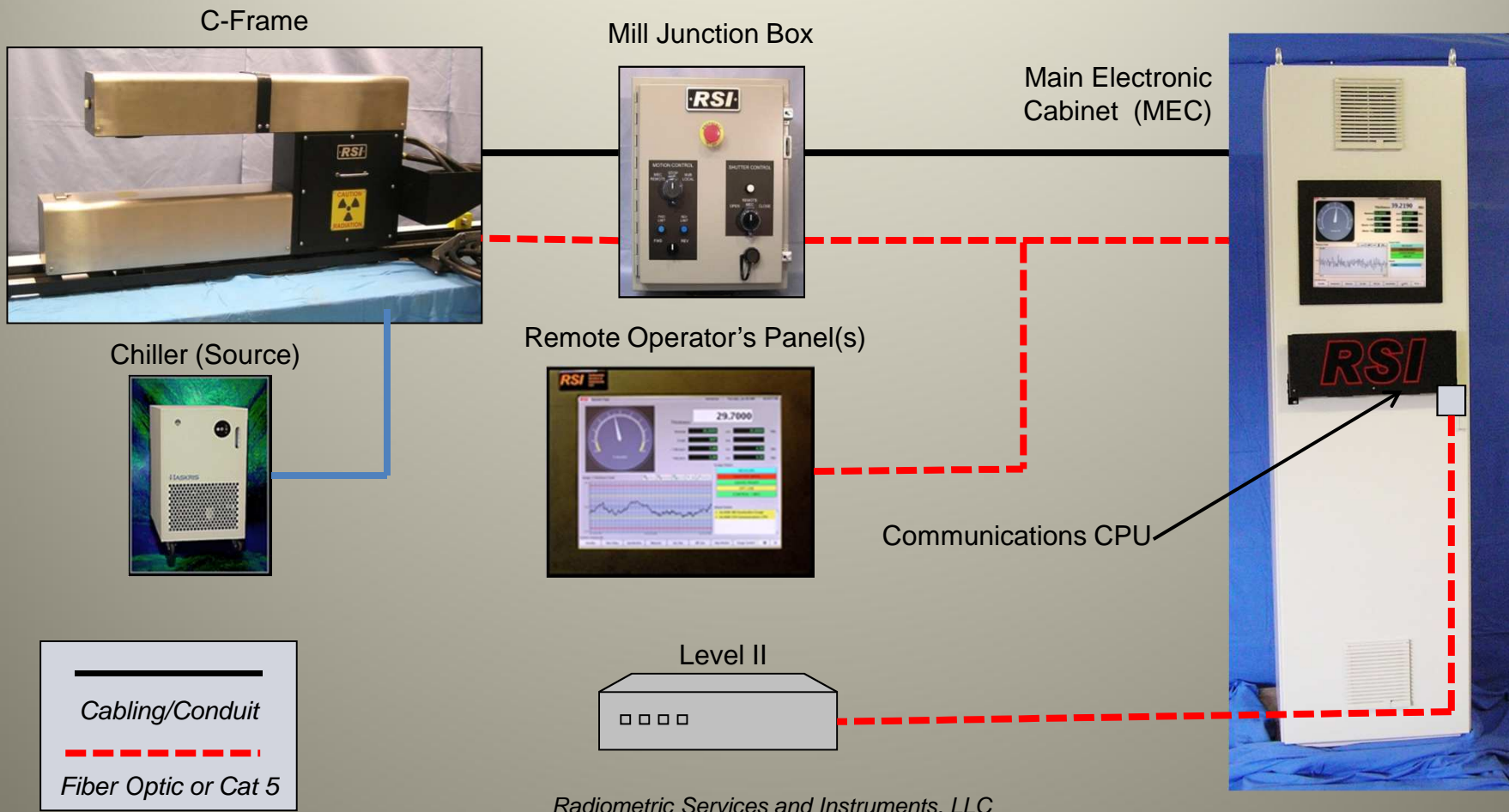
RSI - China - 2006

- Located in Beijing
- Staffed by direct employees
- Sales, Support and Service for the Chinese metal producing market
- Provide local level interface with international mill builders (OEM)



RSI maintains a worldwide network of agents with local offices in the United Kingdom, China, Italy, Turkey and Taiwan to better serve the customer.

RSI ... Typical System Configuration



RSI...Advanced Features

Available from no other company:

- XSC (X-ray Spectrum Correction) maintains constant beam energy and intensity for long term accuracy
- Pneumatic standard magazine with minimal (typ. 3 or 4) calibration samples for improved reliability and less downtime
- Multiple processors (CPU's) for fastest speed and reliable networking
- Networked design with advanced diagnostics. Remote service support via Internet, if available.
- Most existing DMC and Radiometric measurement sensors can be upgraded and reused to lower initial cost of ownership and on-going support

RSI...Advanced C-frame Designs

C-frame designs are computer analyzed for strength and rigidity prior to manufacture



Stainless Steel Hot Mill C-frame



Cold Mill C-frame

RSI...Recent System Orders

Tata Steel - Ijmuiden	Electrolytic Tinning Line
Changhai Stainless Steel thru ABLYY	Hot Mill
Alcoa Mill Products - Lancaster	#2 Bliss Mill
AK Steel – Zanesville Works	#1 AP Line
NMLK – Pennsylvania	#35, #27, #28 and #2 Shear Lines
ATI Flat Rolled Products – Midland	DRAP Line
MSC Walbridge	Electro-Galvanizing Line
Spartan Steel Coatings	Hot Dip Galvanizing Line
Hebei Ruifeng thru ABLYY	Hot Mill
ArcelorMittal Galati	Hot Dip Galvanizing Line
Tata Steel – Thomas Steel Strip	Cold Reversing Mill
Hussey Copper	Scalping Line
Tata Steel – Trostre Works	Electrolytic Tinning Line
Heyco Metals	Reversing Mill
USS Gary Works – Midwest Plant	80" Cold Mill
ArcelorMittal – I/N Kote	Hot Dip Galvanizing Line
Hebei Ruifeng thru Smart Power	Hot Mill
Ton Dong A thru CN Steel Plant Eng.	Hot Dip Galvanizing Line

Over 150 systems and upgrades in service around the world